

See Field Book H, page 43
 "Plot Book - page 62"
 Mailed Map & Cert. of Survey
 to S. A. Moller - S.W. Co
 10th & Washington - Oct 21-1912

Survey of Lots - 7-8-9-10 - in Blk. 1 - Terrace Subdivision

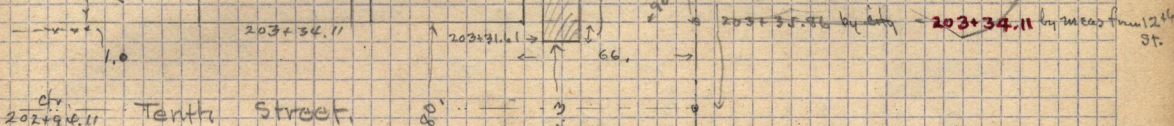
for S. Moller - W.A. Moller asst.

Mont. Cr. 9th St. Recorded Sta = 209+90.44 by Lot 7
 meas N from 12th St = 209 + 88.55 - ad corner

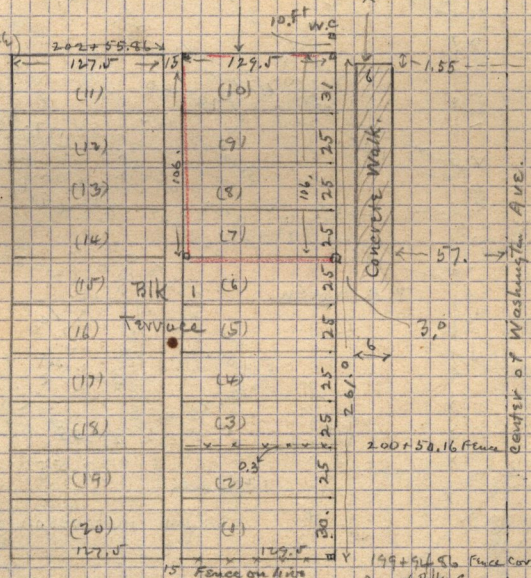
Sec. line = 209+38.07

City Mont N = 64. (Red Sand Stone)
 Sta 204+45.83 according to City Eng.
 " 204+44.08 " my meas. from 12th St.
 See A, p. 42

Alber Street



202+54.11 by meas from 12th St



202+54.201 = Sta. showing South from Mont 64.
 but by meas. N. from 12th St
 the sta = 202+54.06 ✓

note: there appears to be
 an error of 1.20 ft
 in the city station
 in the city station

H.H. Street

End of Walk. → 199+01.53 by meas from 12th St.

ctr. 12th St. → 193+54.16